

Old House Journal's NEW OLD HOUSE

Building Character in Today's Homes

Decorate with
Vintage Salvage

Farmhouse
Design Ideas

Classic Style

5 Timeless Retreats

+

Create an Authentic
Arts & Crafts Interior

Add Handmade
Art Tile



FALL/WINTER 2013
\$6.99 U.S. / CANADA

Display until December 1st, 2013

0 70992 39197 4 11>

www.oldhouseonline.com

classically REGIONAL

The architectural firm marries classical detailing and vernacular style with this mountain-high retreat. Greek Doric columns are made from hand-hewn timbers. The elliptical shape of the portico and the rounded purlins set the tone for softer, more fluid detailing inside.

Historical Concepts creates a home that's the perfect backdrop for family heirlooms—as well as breathtaking Blue Ridge Mountain views.

BY MARY GRAUERHOLZ
PHOTOS BY EMILY FOLLOWILL

Perimeter stone walls, rising from floor to ceiling in the interior, suggest "foundation pillars." A lower level of the home is the more casual space for the homeowners and guests.



Poised at a juncture of craggy rock and blue sky, the North Carolina mountain home is more like a refuge than a destination, beckoning visitors to open the antique chestnut door, drink in the airy interior, and catch the hypnotic trails of mist rising around the Blue Ridge Mountains. No wonder homeowners Mary and Marshall Bassett, currently residents of suburban Philadelphia, see their home as a retreat.

The beauty of the house—which the Bassetts intend to live in year-round after retirement—is that it is so supremely different. This western, mountainous part of North Carolina is dotted with communities of summer people who spend the warm months in rustic, chalet-style homes. As sweet as the typical mountain architecture is, the Bassetts wanted a higher-style escape, a house infused with classical details and traditional forms. "It's to be a permanent home," Marshall Bassett says. "We wanted it to be more on the formal side because of the way we live."

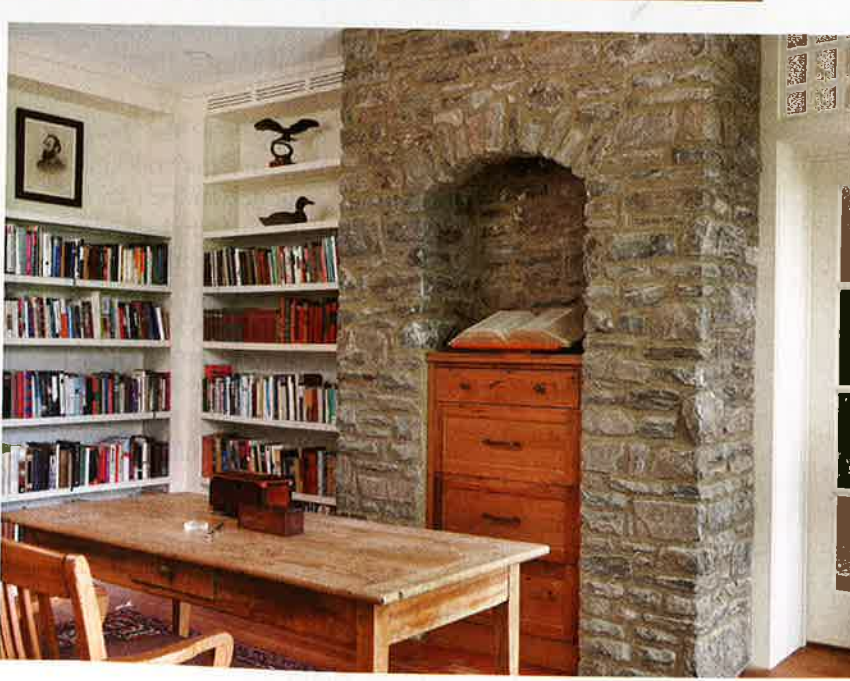
They also wanted to do justice to their collection of treasured family antiques, such as the 1810 slant-top desk in the living room, the blue porcelain dishes standing in the dining room's built-in cabinet, and the early 1800s English

needlepoints hanging on the walls, some of which originate in Marshall's Southern roots. Another emotional pull was the family's years of living on the Eastern seaboard and its beautiful old seaside cottages. "We've lived so long in the Northeast," Marshall says.

The Bassetts knew that building their retirement home would be a tall order: The house would need to express who they are and their family traditions, while allowing for a stylistic fit within the mountainous region—within the location's steep grade and a nature-prescribed buildable envelope measuring less than one-third of an acre.

They found the key to their house at Historical Concepts, an award-winning traditional architecture firm in Peachtree City, Georgia. Terry Pylant, a firm partner and principal, guided the team of Historical Concepts and local experts, including Morgan-Keefe Builders in Asheville, North Carolina. "We wanted to achieve a certain formality," Marshall says, "but we weren't interested in cathedral ceilings and that type of thing. We chose Historical Concepts because of their traditional vernacular."

Located in the Balsam Mountain Preserve, a gated com-



Clockwise: Classical pilasters frame the dining room and establish a sense of formality. Casual spaces are finished with exposed stone and built-in bookshelves. The light-filled entry hall is warm and welcoming.



Left to Right: The kitchen's simple hand-crafted cabinetry and soapstone countertops create a vintage feel. A large open-shelf pantry affords plenty of storage. A white wall of tile creates the perfect backsplash.

munity in the mountains outside of Asheville, the home's design was a delicate balance for Pylant and his colleagues. While the Historical Concepts team was determined to rise above the wilderness motifs of much of the surrounding architecture, Pylant knew it was just as important that the house didn't overpower the setting. Pylant succeeded by carefully distributing the space on the side of the mountain, separating a bedroom cabin, and tucking the garage into the terrain to give the appearance of smaller, slightly separated structures.

The resulting three-level home tells a strong, lovely story in nuanced style: simple but sophisticated, rich but warm and welcoming, traditional with a rustic edge. The first floor contains the main living space, all of it spacious and bright: living room, dining room, kitchen, and wine room. Clearly the Bassetts love to be here, in the common space. "The heart of the home is the kitchen, and the soul is the wine cellar," Marshall says, lightheartedly. The dining room, framed by classical pilasters, is filled with the family's treasured antiques, including Chippendale dining chairs and a Sheraton style table. With their daughter, Charlotte, the Bassetts often sit down in the window-lined breakfast nook, centered with a table that belonged to Marshall's great-grandmother, the spot

where she stored her butter churns.

Mixing classical style and the traditional aesthetic of the mountain region required a deft interpretive touch. "We decided to incorporate classicism in a softer, more nuanced fashion," Pylant says. They did this by working with locally sourced materials—experimenting at times to see what worked—and, as he says, "reimagining regional detailing" for a new classical style language with a hint of regional dialect. The beautiful stone is all local, and floors are heart pine. The seaside touches of the Northeast that the Bassett family loves so much are seamlessly incorporated throughout: Palladian windows, the gambrel roof, a shingled exterior. "Like a lot of old beach houses, we wanted to rusticate it," Marshall says.

The success of the intermingled approach is evident throughout the house: the Greek Doric columns crafted from rough, hand-planed timbers that stand in the entry portico; pristine detailing and millwork framing lightly washed wood walls; a stunning fireplace in the living room that reflects local tradition, but is softened and refined with a classical mantel. Railings on the side porch and back balconies were built with top and bottom rails of locust and filled in with free-form laurel.

Pylant achieved the interior's easy-on-the-eyes mood by

designing for maximum flow. "Since there are three levels, the stair became the vertical axis point," he says. By placing the stair, with its sublime chestnut balustrade, in the home's forward corner, Pylant says, "the connecting rooms radiate from that point at each level. The key is to minimize the connecting corridors."

Pylant pulled from the talents of a team of local craftsmen, including stonemason Cody Macfie of Steep Creek Stone Works and landscape architect Barry Cosgrove of Barry Cosgrove Landscaping, both located in North Carolina.

Another key piece of the team was interior designer Kip Farmer, of Kip Farmer Design in Evansville, Indiana, who supported the classical style, woven with a vernacular understatement, with sweeps of neutral wall tones. The subtle palette allows the awesome views of the mountains to provide the color. "Kip was an essential part the team," Marshall says.

Farmer recalls going to his first meeting at the site, hiking the last piece of the way, all the while "being so distracted by the breathtaking view, I could hardly focus on the construction meeting at hand." Farmer let that awe and respect guide him. Like Pylant, he drew on the great local talent of the region, including primitive artists who offered original pot-

tery and artwork, hand-knotted rugs, antique quilts, custom lighting fashioned from reclaimed vintage fittings, and down-to-earth fabrics.

Like the architectural and design touches, the creative roots of the Bassetts' home are a sublime mix of history, identity, tradition, experience, and ancestry. Finding the right language—and the right team—to meld it was the key to success, Pylant says.

"A client with sophisticated tastes had a higher vision," Pylant explains. "An architectural design team struck a balance between the vernacular and the classical. An interior designer adeptly blended antiques, art, and furnishings for an ambiance simultaneously traditional and comforting. A homebuilder drew upon the skill of inspired craftsmen, with a commitment to artistry, to quality, and to time-honored techniques. The sum of these parts is what gives the home a true sense of authenticity, of belonging, to the mountain and to an earlier time." *NOH*

Mary Grauerholz is a freelance writer living in Falmouth, Massachusetts.

For resources, see page 64.

RESOURCES

DRAFTING BOARD, PAGE 14

Robert Goodwin
R. Goodwin LTD
215.862.2381

YANKEE INGENUITY, PAGE 32

ARCHITECT
Sandra Vitzthum
802.223.1806

BUILDER
Millar Construction

Kathy Taft Boyden
Kind Horn Farm
Icelandic Breedstock, Farm
Bred Certified Organic Fiber,
Grass-fed Lamb
kindhornfarm.com

KITCHEN
STONE SINK AND COUNTERS
Vermont Stone Art
vermontstoneart.com

SLATE HEARTH
Vermont Slate Co.
vermontslateco.com

MASONRY
Bozack Masonry
802.496.2368

BARN RESTORATION
Black Barn Timberworks
802.285.2250

KITCHEN DRESSER
Phil Lundblad
802.496.3589

REFRIGERATOR
Jenn-Air
jennair.com

STOVE
AGA
aga-ranges.com

BATHROOM SINKS
ReSOURCE Household Goods
802.658.4143
resourcevt.org

LIGHTING
Hudson Valley Lighting
hudsonvalleylighting.com

Visual Comfort & Co.
visualcomfortlightinglights.com

CABINETRY
Calendar Brook Cabinetry
calendarbrookcabinetry.com

TEXAS ORIGINAL, PAGE 40

ARCHITECT
Ignacio Salas-Humara
PO Box 158
Comfort, TX 78013

CLASSICALLY REGIONAL, PAGE 46

ARCHITECTS
Historical Concepts
Project Team: Jim Strickland, Terry
Pylant, Domenick Treschitta, R.A.
Megan Nelson, Dan Lemberg
historicalconcepts.com

KEY CONTRACTORS,
SUB-CONTRACTORS &
CRAFTSPEOPLE
GENERAL CONTRACTOR
Todd Brinkman, Project Manager
Morgan-Keefe Builders
morgankeefe.com



KEY PRODUCTS,
MATERIALS & SUPPLIERS
ANTIQUE HEART PINE HARDWOOD
FLOORS & COUNTERTOPS
Richard Riggs
Country Wood Works
countrywoodworks.com

Wine Room Cabinetry
Kessick Wine Cellars
kessickwinecellars.com

EXTERIOR SIDING AND TRIM
Tom Guthke
Mountain View Siding
mountainviewsiding.com

KOLBE WINDOWS
(WITH HIGH ALTITUDE GLASS)
Southeast Builder Supply
kolbe-kolbe.com

CUSTOM LIGHTING
(ANTIQUE & RE-PURPOSED)
Eloise Pickard
Sandy Springs Galleries
770.386.3010

CUSTOM LOG COLUMNS
Larry Hans Vorpahl
1000 Mulkey Rd.
Ellijay, GA 30542

Rocky Mountain Properties, LLC
rockymountainloghomes.com

ELECTRICIAN
Gary Hughes
Hughes Electrical Contracting, Inc.
828.454.0048

INTERIOR DESIGN
Kip Farmer, Kip Farmer Design
kipfarmer.com

INTERIOR TRIM AND CABINETRY
Zach Bassett, Bassett Builders
828.651.0054

LANDSCAPE ARCHITECT
Donald Hooten
Donald Hooten & Associates
404.373.9816

LANDSCAPING
Barry Cosgrove
Barry Cosgrove Landscaping, Inc.
barrycosgrovelandscaping.com

STONE MASON
Cody Macfie, Steep Creek
Stoneworks, Inc.
steepcreek.com

GEORGIAN PEACH, PAGE 52
ARCHITECT
McKee Patterson, AIA,
Partner-in-charge, Don Kirmizi,
Project Manager
Austin Patterson Disston Architects
apdarchitects.com

BUILDER
Foster Lyons
Coastal Point Construction
203.661.1107
coastalpt.com

INTERIOR DECORATOR
Lillian August
lillianaugust.com

FOYER LIGHT FIXTURE
Victorian Hotel Pendant,
Restoration Hardware
restorationhardware.com

SOFA & MIRRORS
Lillian August
lillianaugust.com

DINING ROOM PENDANT LIGHT
Crown top banded globe,
Circa Lighting
circalighting.com

FIREPLACE
Chesney's NYC
chesneys.com

TABLE & CHAIRS
Lillian August
lillianaugust.com

BEAUTY & PURPOSE, PAGE 60
LIGHTING
Brass Light Gallery
brasslightgallery.com

House of Antique Hardware
houseofantiquehardware.com

Luminaria Lighting
luminaria.com

Mica Lamp Company
micalamps.com

Old California Lamp Co.
oldcalifornia.com

Rejuvenation
rejuvenation.com

School House Electric
schoolhouseelectric.com

Vintage Hardware
vintagehardware.com

TEXTILE & PAPERS
Ann Wallace & Friends
annwallace.com

Archive Edition Textile
archiveedition.com

Bradbury & Bradbury Art Wallpapers
bradbury.com

J. R. Burrows
burrows.com

Charles Rupert Designs
charlesrupertdesigns.com

Trimbelle River Studio & Design
trimbelleriver.com

Millwork & Cabinetry
Hull Historical Architectural Millwork
hullhistorical.com

FURNISHINGS
Circa 1910 Antiques
circa1910antiques.com

Stickley
stickley.com

TILE
Skiersch Studio
skierschstudio.com

Above: Furnishings from
Stickley's Mission Oak
collection. Shown here are
the "Slat Settle," "Slatted
Morris Chair," glass-top
"Cocktail Table," and
"Gus Tea Table." Below:
Paired Dragonfly tiles from
Skiersch Studio.

